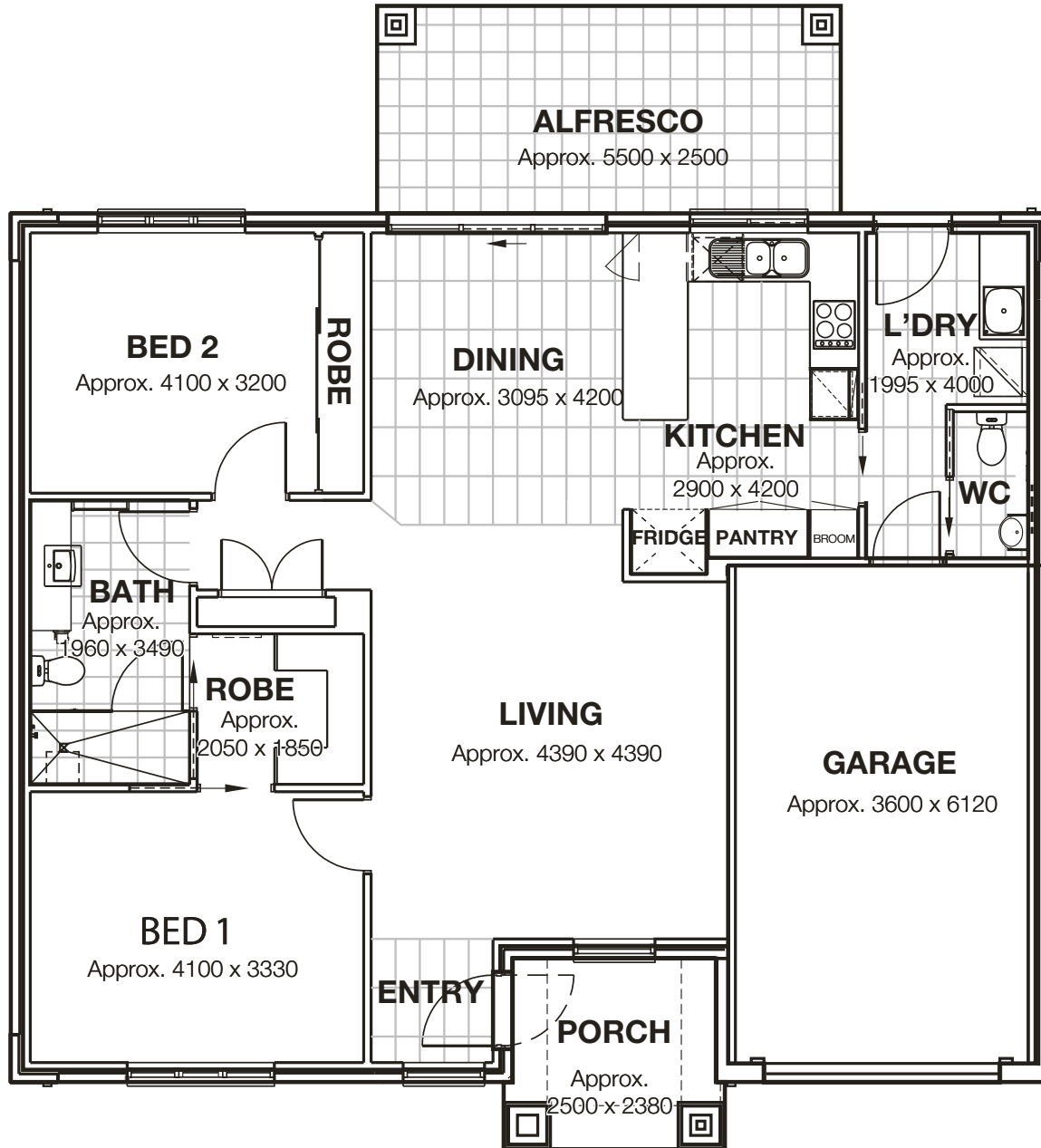




# Silvan 2 Bedroom + Garage



	Metric	Imperial
Area:	104m <sup>2</sup>	11.2 squares
Garage Area:	22m <sup>2</sup>	2.4 squares
Porch:	5.95m <sup>2</sup>	0.64 squares
Alfresco:	14m <sup>2</sup>	1.5 squares
<b>Villa Total:</b>	<b>145.95m<sup>2</sup></b>	<b>15.7 squares</b>

The information on this floorplan is believed to be correct but is not guaranteed. Dimensions and specifications are subject to change without notice. Prospective Purchases must rely on their own enquiries. Published by Lend Lease Primelife Realty Vic Pty Ltd, November 2010.