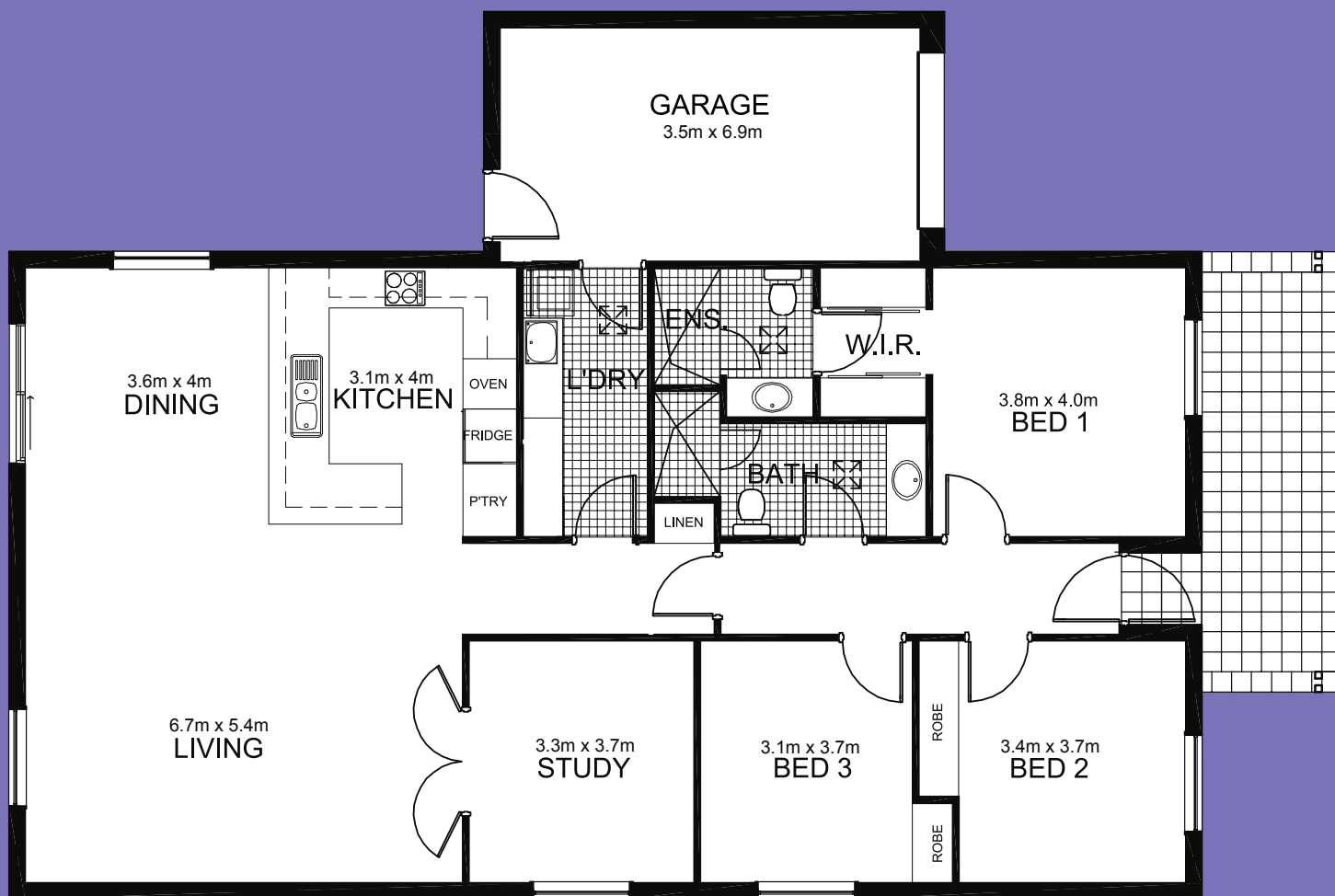


# Montpelier V

## 3 Bedroom + Garage

Area:	173.5m <sup>2</sup>	(1,867.5 sq.ft.)
Garage area:	24.8m <sup>2</sup>	(266.9 sq.ft.)
Porch:	8.1m <sup>2</sup>	(87.2 sq.ft.)
<b>VILLA Total:</b>	<b>206.4m<sup>2</sup></b>	<b>(2,221.6 sq.ft.)</b>



Note: This plan is for marketing purposes only. Area sizes and room dimensions are nominal only and subject to minor variations. March 2007.

**Elliot Gardens** *another Primelife option.*

Open 10-4 daily. Freecall 1800 550 550 or visit our website.

18 Montpelier Terrace, Port Elliot, SA 5212.

**Primelife**.com.au