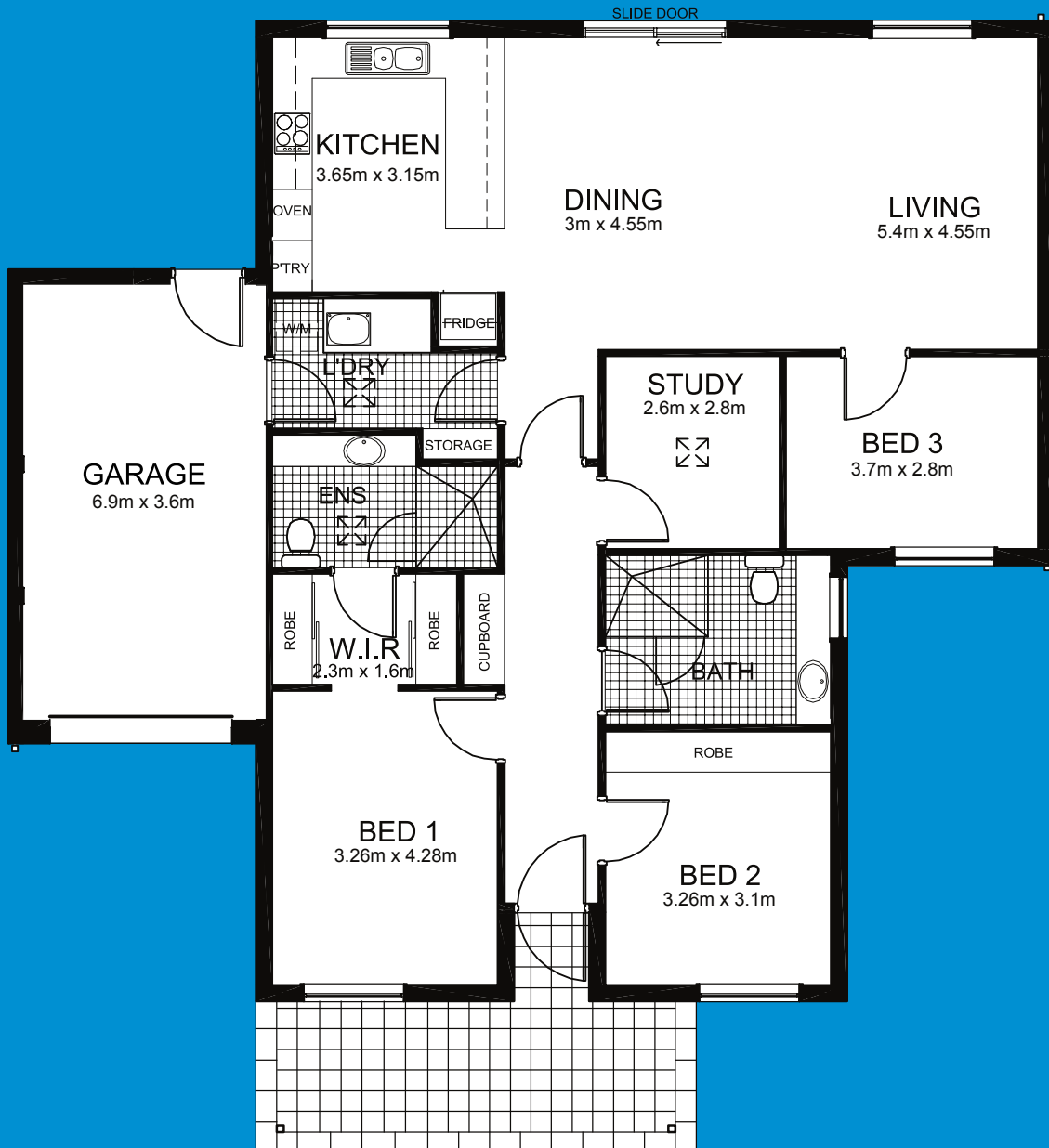


Carnegie V

3 Bedroom + Garage

Area:	149.5m ²	(1,609.2 sq.ft.)
Garage area:	25.7m ²	(276.6 sq.ft.)
Porch:	9.2m ²	(99 sq.ft.)
VILLA Total:	184.4m²	(1,984.8 sq.ft.)



Note: This plan is for marketing purposes only. Area sizes and room dimensions are nominal only and subject to minor variations. March 2007.

Elliot Gardens *another Primelife option.*

Open 10-4 daily. Freecall 1800 550 550 or visit our website.
18 Montpelier Terrace, Port Elliot, SA 5212.

Primelife.com.au